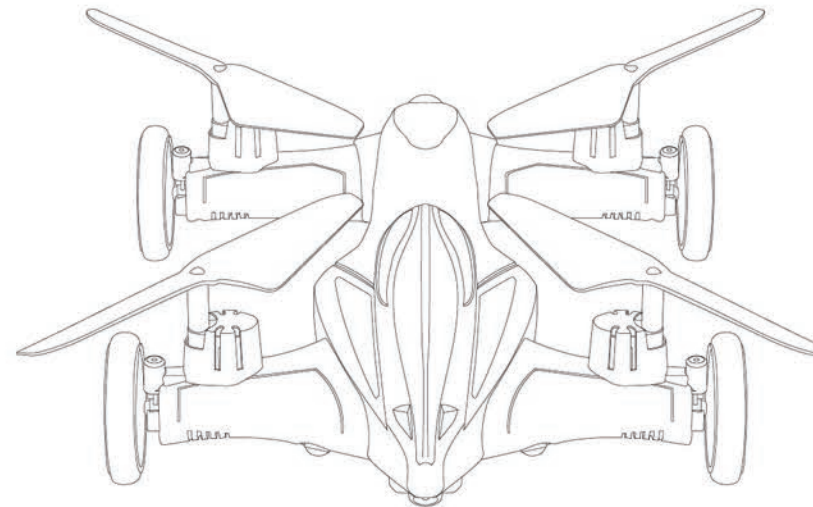


6-AXIS GYRO REMOTE CONTROL SERIES 4 CHANNEL STUNT FLYING CAR



OPERATING MANUAL

MAIN CHARACTERISTICS

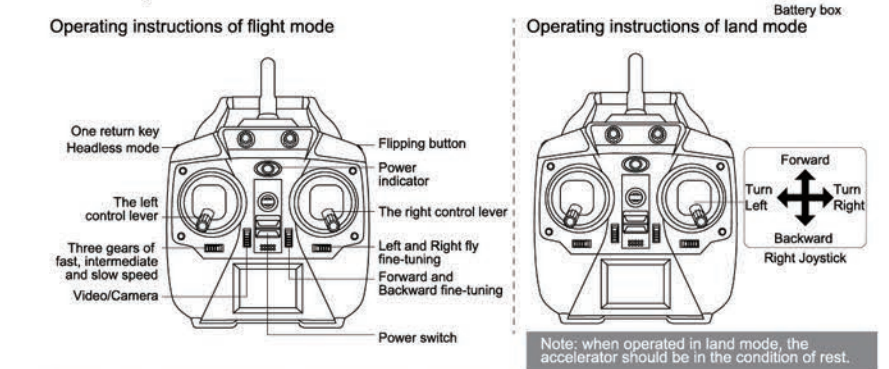
- Four-axis structure is applied, which makes the quad copter more flexible and rapid when flying. It has the characteristics of wind-resistant and can be used indoors or outdoors.
- Vehicle and aircraft is integrated as one, which not only can fly but also move on the land.
- Built-in 6 axis gyroscope for precise hovering in the sky.
- Modular design structure is applied, more simple for assembly and convenient for maintenance.
- With 360 degree 3D eversion function and throwing flight function.

The material, specification, component packing inside of the manual are for your information. Our company is not responsible for foreign body of the print. And we are not taking the initiative to inform consumers of any updates or changes.

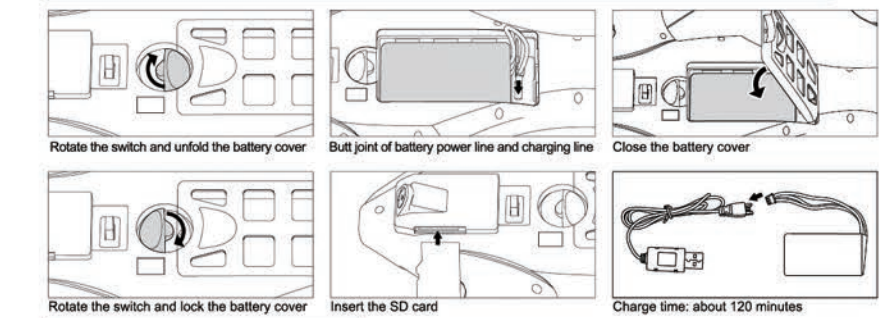
Ages Up
14+

1. FUNCTIONS OF TRANSMITTER AND INSTALL INSTRUCTION

1. Functions of remote control as Fig
2. Installation of remote control as Fig, to install 4 AA batteries (additional purchase) in right way
Caution:
1. Install the battery should recognize the positive and negative terminals of the battery and battery box. Can not install in reverse.
2. Don't mix use the new and old battery, or difference kinds of battery.



2. BATTERY INSTALLATION AND CHARGING METHOD OF AIR VEHICLES



3. PREPARE FOR TAKE OFF

1. Insert the battery plug into the battery jack of the quadcopter, open the power switch, Put the quadcopter on the flat ground, then the indicator light is flash fast. In this time, the quadcopter are in matching code status.
2. Turn on the transmitter, the indicator is flash with "di, di, di" sound. At this moment, the transmitter is in matching code status. Pull up the left joystick from the lowest position to highest position, then pull it back. And the indicator light keeps on, you can operate.
3. The quadcopter should march code every . time after power on, and then you can operate.
4. Every time you turn on or off the transmitter, the quadcopter need. to re-open , and they should match code again.

Tips for low tension

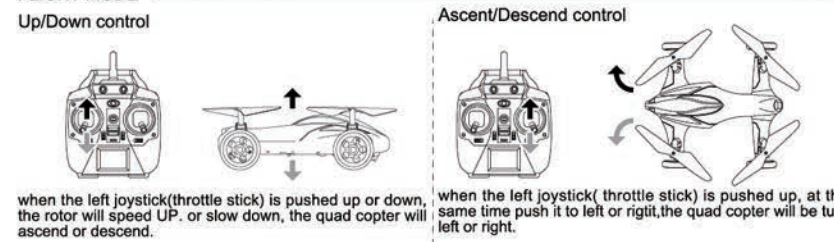
When the product is low in battery, the lights on the airframe will all be flashing, indicating that the product gets into low voltage state. Please control the air vehicle to make a return voyage. Under low voltage, the vehicle cannot make rolling movements.

Level calibration and trim reset

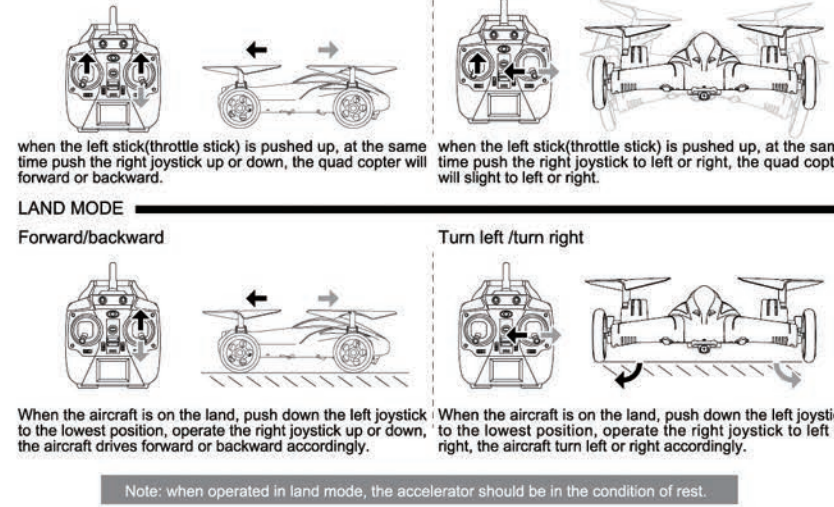
During the flying, if the vehicle deviates to one side, adjustments can be made by calibrating or restoring via the remote control. When pulling the accelerator joystick and direction joystick simultaneously to lower left, the lamplight of the vehicle will flash slowly. After completing the calibration, the light will be normally on. When pulling the accelerator joystick and direction joystick simultaneously to lower right, the light of the vehicle will flash swiftly. After completing the restoration, the light will be normally on.

4. AIR AND GROUND MODE OPERATING MANUAL

FLIGHT MODE



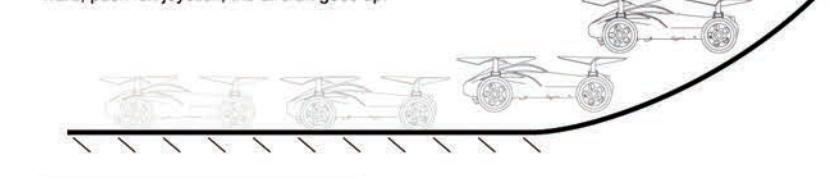
LAND MODE



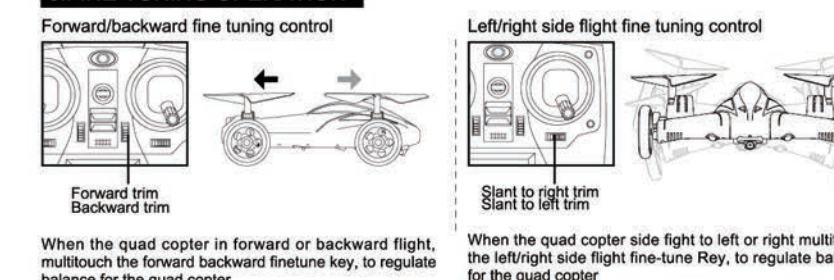
Note: when operated in land mode, the accelerator should be in the condition of rest.

5. LAND AND AIR OPERATION MODE CONVERSION

Put the aircraft on the ground, when it drives forward or backward, push left joystick, the aircraft goes up.



6. FINE-TUNING OPERATION

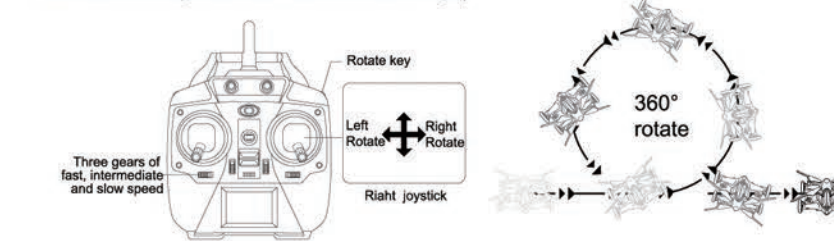


7. THE WAY FOR CAMERA SHOTS(ONLY FPV AERIAL VERSION& WIFI VERSION)

1. Turn on the power of the quad copter, the blue light of the camera is always on and red light is out. It show that the camera is in normal working state. When the blue light is always on and the red light is flashed, it meant that the SD card does not access.
2. Photograph: When the camera is in normal working state, press the photograph key, " Di " is heard and the red light of the camera is flashed, it meant the photograph is completed.
3. Video : When the camera is in normal operating state, press the video key, " Di " is heard and the red light is always on, it is videotaping . When you press the key again, " Di " is heard and the red light is out, it is finished .

8. 3D ROTATE OPERATION

when the quadcopter flying , press rotate key ,it have the "didi" sound. Push right joystick, the quadcopter will rotate around(forward/backward/turn left/turn right).



Three gears of fast, intermediate and slow speed

9. ONE RETURN KEY & HEADLESS MODE

When placing the vehicle right ahead, fly it after checking the frequency. When pressing the button of upper left, the vehicle enters into one-key course reversal mode. Control the stop key of direction joystick, the course reversal enters into headless mode. If you want to exit the headless mode, press the button of upper left.

10. SAFETY CAUTIONS

1 Important announcement
(1)The product is not a toy, but it's a sophisticated equipment integrates the expertise of mechanics, electronics, aeromechanics, high frequency transmitter, etc. It should be assemble and debug exactly to avoid the accidents. The owner of this product should operate it in safety way. If operate improperly, it may cause serious bodily injury and property damage. We do not assume responsibility, because we could not control the process of their assembling, using and operating.
(2)The product apply to the crowd have experience of operating model and above the age of 14.
(3)The place for flight should be legal of location to handle remote control model.
(4)Product once sold, we are not responsible for safety duty cause byoperation, using, handling, etc.
(5)If you have questions of using, operating or maintaining, please contact to local authorized dealer, they will provide technical assistance and service.

2 Safety Caution
RC quad copter model is a high-risk of goods, you must be sure to keep away from crowd when in flight. Artificial assemble improper or body damaged, poor electronic equipment, and unfamiliar operation, it possible to cause unpredictable accident of quad copter damaged or personal injury, etc. Please pay attention to safety, and take responsibility of your negligence.
(1)Keep away from barrier and crowd
It has uncertain flight speed and state when the RC quad copter is flying. When in flight, please keep away from crowd, high building, high-tension wire. At the same time, avoid to flight in the storm and thunder. To make sure the safety of pilot, crowd and property.
(2)Safely operate
According your status and flight skill to control the quad copter. Fatigue, mental poor or improper operation, will increase the probability of an accident risk. When you tired and out of sorts or improper handling, it will increase the risk of accidents.
(3)Keep away from high-speed rotary parts
When the propeller at high speed rotating, the pilot, crowd or other object should keep away from the rotating part-for fear of causing the risk and damage.
(4)Keep away from heat
The RC quad copter is be made up of metal, fiber, plastic and electronic components. Therefore, it should be keep away from heat and keep off the sun, avoid the heat set off deformation of the shape even damage.

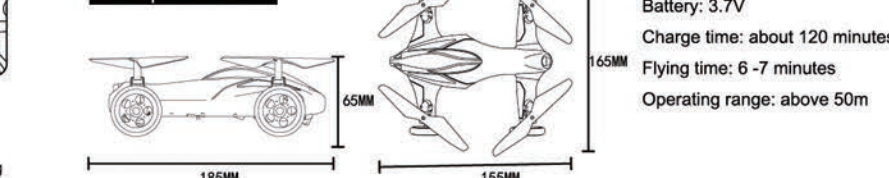
3: Preflight notice
(1) Flying environment should be an open space. The recommendation of the space is more than 8M(width) x8M (length) x 5M(high)
(2)Make sure the power state of batteries for transmitter and receiver is full .
(3)To ensure the throttle stick and throttle trim of the transmitter is on the lowest position.
(4)In starting up, you must be comply with order of power on and off. When starting up, you should be open the power of transmitter first, then open the power the quad copter. When power off, you should be cut off the power of the quadcopter, then turn down the transmitter. Incorrect order of power on and off may cause the quad copter out of control, and affect the safety of others. Please make a habit for correct turn on or shut off.
(5)To confirm the junctions of the battery and motor or other components are tight. The shock in flying will make the junction of power loose. then cause the quad copter out of control.

Packing instruction

All items below are included in packing:
(1)Quadcopter
(2)Remote control
(3)Main blade
(4)USB Charger
(5)Instructions
(6)Screwdriver

Labels: B blade, A blade, A blade, B blade

Main parameter



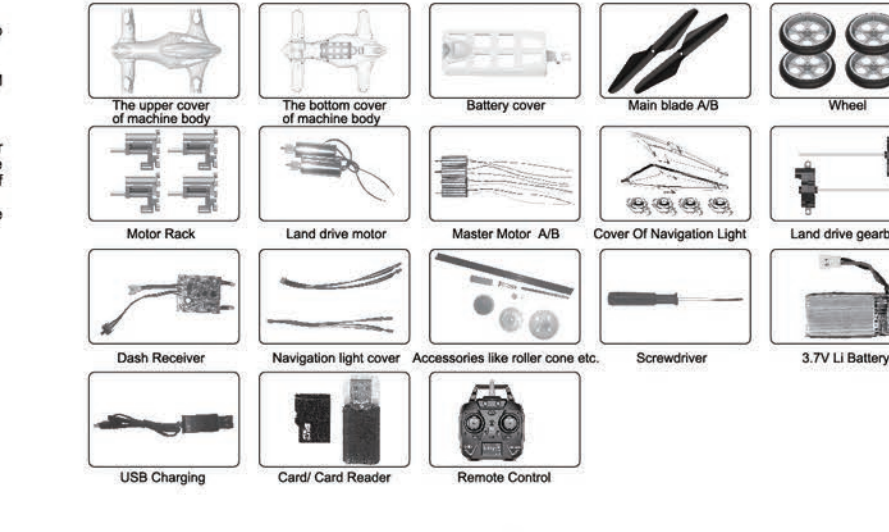
Waterproof functions:

The waterproof functions of this product are only limited to daily waterproof functions and not suitable to long-term immersion or operation under water deliberately (long-term immersion will result in many hidden dangers such as malfunction of motor, battery, circuit board and switch etc., which will result in life-span shortening of the product.) Suggestions: if it falls in the water accidentally, you should timely blot up the water, keep it dry and continue to use after ensuring the motor, battery, circuit board and switch are in good condition.

Troubleshooting guide

Problem	Cause	Solution
The vehicle has no reaction	The vehicle is low in battery. Low-voltage protection is conducted on the vehicle The vehicle is in gyroscope detection state	Recharge the battery Place the vehicle on the flat ground and recheck it
Copier is not flying high enough	The vehicle is not matched with the remote control Rotor speed is too slow. Copier is not fully charged.	The vehicle is matched again with the remote control. Pushing up the left stick(throttle stick). Fully charge your Copter.

Accessories



Labels: B blade, A blade, A blade, B blade